



# WANDIN NORTH PRIMARY SCHOOL

## Weekly News

220 Warburton Highway,  
Wandin North, 3139  
P: 03 5964 4570  
E: wandin.north.ps@education.vic.gov.au  
W: wandinnorthps.vic.edu.au

28<sup>th</sup> April 2025

Monday	Tuesday	Wednesday	Thursday	Friday	Weekend
28/04	29/04	30/04	01/05	02/05	Sunday 04/05
	Athletics Day Gr 3-6			Book Fair 8:25am & 3:30pm	Working Bee #3 9:00am—11:00am
05/05	06/05	07/05	08/05	09/05	
	Camp Howqua Grade 5/6	Camp Howqua Grade 5/6	Camp Howqua Grade 5/6	Camp Howqua Grade 5/6	
Book Fair 8:25am & 3:30pm	Book Fair 8:25am & 3:30pm			Photo Trail / Tabloid Sports Gr P-2	
12/05	13/05	14/05	15/05	16/05	
			Open Night 5:30pm—7:30pm  Tours 5:30pm, 6:00pm & 6:30pm Bookings Essential	Geography Incursion Gr 1/2	
19/05	20/05	21/05	22/05	23/05	
	School Council	District Cross Country Gr 3-6			
26/05	27/05	28/05	29/05	30/05	
		Mt Evelyn Discovery Camp Gr 3/4	Mt Evelyn Discovery Camp Gr 3/4	Mt Evelyn Discovery Camp Gr 3/4	
			Melbourne Zoo Excursion Gr 1/2	Free Dress Day	
02/06	03/06	04/06	05/06	06/06	
				Curriculum Day	
09/06	10/06	11/06	12/06	13/06	Sunday 15/06
King's Birthday Public Holiday					Working Bee #4 9:00am—11:00am

## Noteworthy :

### ♦ **Working Bee #3 : Sunday 4<sup>th</sup> May 9:00am—11:00am**

Families rostered on : Teresa Salvitti (School Council Representative), Angus, Chiang, Clowes/Mildenhall, Dillema (Lucy), Farrell, Graham (Levi), Hensgen, Hobden, Lusaowaphak, McConnell, Milner, Murcutt, O'Connor, Payne, Prinsen, Rackemann, Rundle, Stirling, Troyahn, Vander Reyden, Vaughan and Wheeler (Bailey).

**OH&S :** To ensure the safety of our volunteers, an OH&S briefing is conducted at each working bee. Please read the "Volunteer Induction Handbook". Further information can be found in WNPS Volunteer Policy which can be found on the school's website. <https://www.wandinorthps.vic.edu.au/wp-content/uploads/2023/02/Volunteer-Induction-Handbook.pdf>

- ♦ **Second Hand Uniforms :** A limited number of uniform items are available in the office foyer. The cost is a gold coin per item. Please feel free to drop in and take a look at what is available.
- ♦ **School Uniform :** A reminder to families that school uniform is required to be worn when attending. If items, such as jumpers are wet or dirty, a note or email is required to your child's teacher. Sporting club jumpers and jackets are not to be worn at school.
- ♦ **2026 Prep Enrolments :** Due to our built capacity, we will be capping our 2026 Prep enrolments; therefore, if you have a child that is commencing Prep at Wandin North in 2026, we would love to see you completed application for prep enrolment being completed on Student Insight. The Student Insight portal opened on the 22nd of April. This will help us have a true indication on how many new families we can accept in 2026. If you would like more information regarding Student Insight, please see the office or collect information from the office foyer.

- ♦ **NO NUTS PLEASE :** Some children at this school are allergic to nuts. We urge you to refrain from sending food containing nuts to school.



- ♦ **NO SMOKING OR VAPING :** Smoking & Vaping are NOT PERMITTED at any time on school grounds or the surrounding areas, including the car parks.

### ♦ **TheirCare OSHC at Wandin North Primary School**

Enrol in Out of Hours School Care – Enrolling is quick and easy! Simply set up your own account online via [www.theircare.com.au](http://www.theircare.com.au) or call 1300 072 410.



## OPEN NIGHT

### Thursday

## 15<sup>th</sup> May 2025

### 5:30pm – 7.30pm

Come and see our school at work!

**Tours Available**  
**5:30pm, 6:00pm**  
**& 6:30pm**

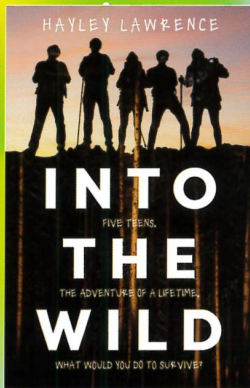
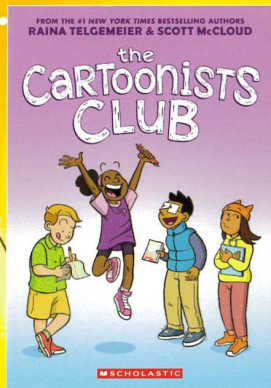
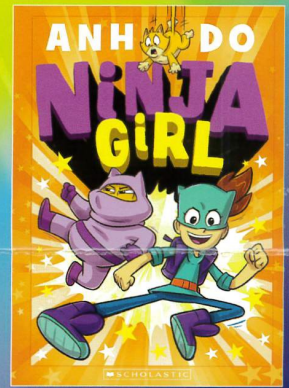
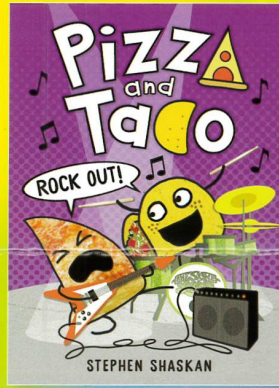
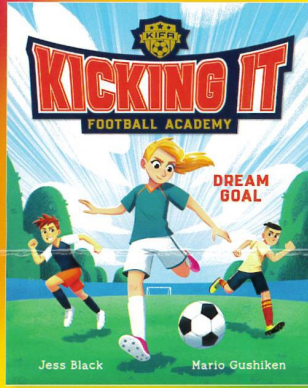
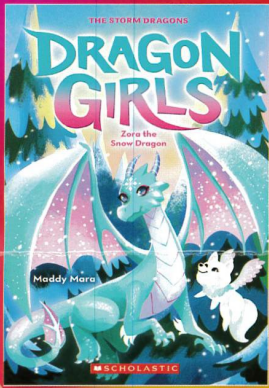
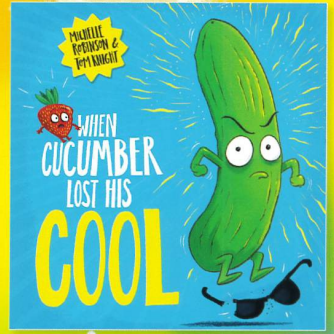
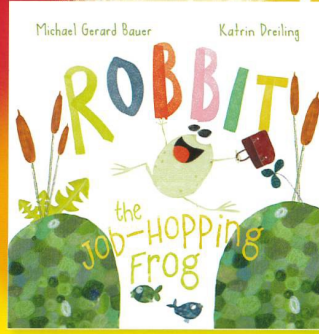
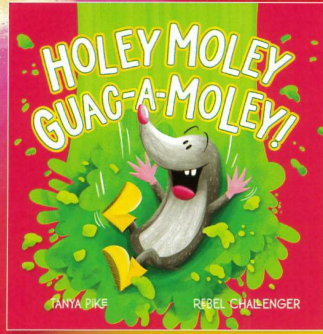
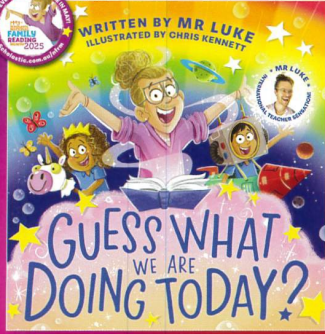
**Bookings Essential**

**Ph : 5964 4570**





# You're invited to our SCHOLASTIC Book Fair



Take the 31-Day Challenge



Date **Fri 2<sup>nd</sup> May - Tues 6<sup>th</sup> May** Time **8:25-8:55 + 3:30-4pm**  
Place **Library**

EVERY DOLLAR EQUALS RESOURCES FOR OUR SCHOOL

